

Fuel Flowage

Total							
	Self-Serve		Full-Service		Total Combined		% Change
Month	100LL	Jet A	100LL	Jet A	Gallons	FFF	Annual Change
January-25	8960	973	4045	16270	30249	\$1,512.44	46%
February-25	6903	317	3099	18166	28485	\$1,424.27	30%
March-25	7865	1612	2705	16616	28797	\$1,439.87	22%
April-25	10339	3245	5951	17768	37303	\$1,865.15	65%
May-25	8656	2229	4827	22883	38595	\$1,929.76	-15%
June-25	9889	2128	6246	20239	38502	\$1,925.11	32%
July-25	10474	3003	7648	20081	41206	\$2,060.30	8%
August-25	9994	3009	4223	20601	37827	\$1,891.34	-12%
September-25	8466	5402	5443	21835	41146	\$2,057.28	32%
October-25	8317	5392	3709	22546	39964	\$1,998.22	10%
November-25	8142	1230	3034	19427	31832	\$1,591.60	36%
December-25	0	0	0	0	0	\$-	-100%
Total	98006	28540	50929	216432	393907	\$19,695.34	9%

Aircraft Operations

2025 ADS-B Airport Operations				
Month	Arrivals	Departures	Total Operations	Annual Change
January-25	1794	1850	3644	24%
February-25	1523	1524	3047	19%
March-25	2803	2801	5604	126%
April-25	2097	2109	4206	-51%
May-25	2071	2067	4138	-51%
June-25	2305	2340	4645	-7%
July-25	2216	2248	4464	-8%
August-25	2096	2130	4226	1%
September-25	1786	1764	3550	13%
October-25	1796	1816	3612	6%
November-25	1254	1270	2524	-13%
December-25			0	-100%
Total Annual	21741	21919	43660	-16%

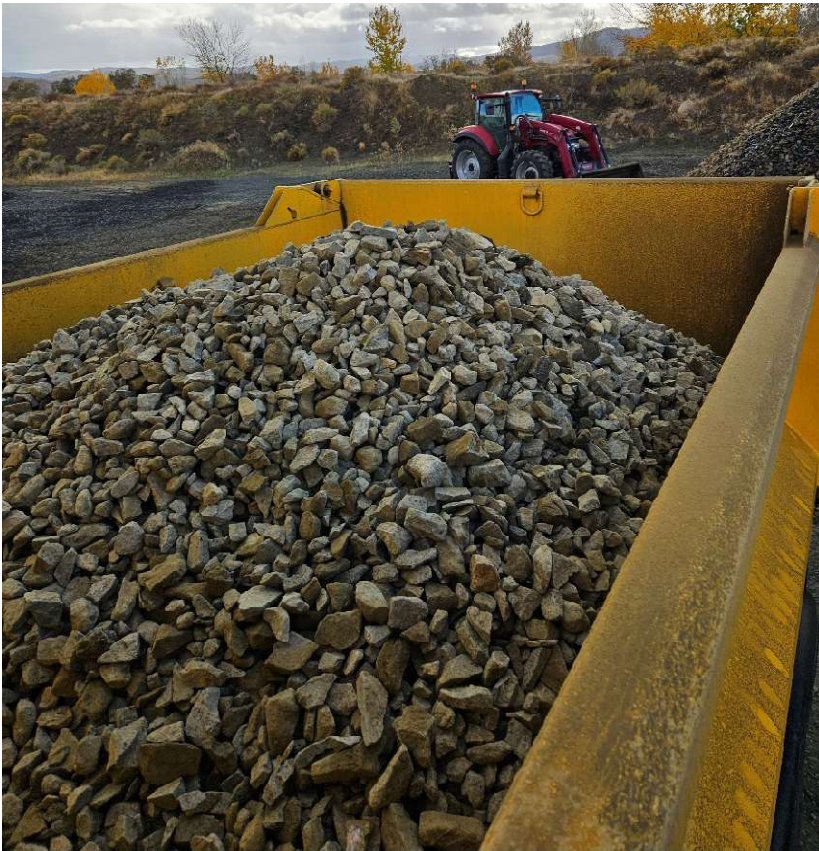
Carson City Airport Authority

Operations and Airfield Maintenance Summary

October 15th – December 5th 2025

Staff overheard a pilot on CTAF announce an aborted takeoff from RWY 27. Shortly after, the pilot announced they were clear of the RWY and stopped on TWY D with an aircraft problem. Staff went to check on the aircraft. It was clear of the RWY on TWY D at D2. The left main gear brake was dragging. The pilot contacted a mechanic at the airport who was able to resolve the brake problem. The aircraft departed RWY 27 shortly after with no issues.

During a SRE building progress meeting, a possible change order was discussed regarding a new requirement for the drainage swale to have a liner with rock on top. To reduce the cost of the change order, it was proposed for airport staff to stockpile the rock at or near SRE site using rock from the airport quarry. On October 26th, airport staff loaded, hauled and stockpiled 75 yards of 1-1/2" rock for the SRE drainage swale using the airport's tractor and new dump truck.





October 27 - 30: Interviews were conducted for the vacant operations and maintenance technician position. Morgan Dolan was selected with a start date of November 10th.

November 10: Morgan started at the airport, his administrative processing was completed, and initial driver training and airport familiarization was conducted.

November 12: Surveyors were on site for a RWY survey in preparation for the RWY safety area drainage improvement project. Staff escorted surveyors to USGS survey monuments on the airport and on the RWY during the process.

Snow removal equipment was prepped and relocated to the parking area west of terminal. Driver training was conducted with Morgan on all snow removal equipment.

A pre-snow season meeting with airport staff was conducted to include review of the snow and ice removal plan.

Staff received a report from the airport manager of an active ELT at the airport. The aircraft was located at a maintenance FBO. The ELT was accidentally set off by a mechanic during installation.

During this period, 14 airfield sign panels were replaced. 90% of the airfield's sign panels have now been replaced since 2022.

Nov 24th – 26th - There were several sightings and reports of a stray dog on the airfield. Staff saw the dog on November 26th and contacted Carson City animal control for assistance. The dog was seen exiting the airport

through a gap in the utility access gate at the southeast end of the airport, then through an opening in a homeowner's fence and into the neighborhood. Animal control searched the neighborhood but did not locate the dog. Staff installed aluminum plates to cover the gap on this gate and two others on the airport. No further sightings reported.

Additional wildlife mitigation and habitat reduction was completed near hangars on the north side of the airport.

Staff repaired the damaged concrete slab and bollards at the main entry gate.

During this period 12 TWY edge lights were replaced, and lights on 6 airfield signs were repaired.

Many of the events during this period provided valuable training and experience for Morgan as he progresses towards working solo at the airport.