

| RUNWAY END COORDINATES (NAD 83) | | | |
|---------------------------------|-----------|---------------------|---------------------|
| RUNWAY | EXISTING | ULTIMATE | |
| Runway 9 | Latitude | 39° 11' 39.2126" N | 39° 11' 39.2126" N |
| | Longitude | 119° 44' 34.9566" W | 119° 44' 34.9566" W |
| Runway 27 | Latitude | 39° 11' 25.3700" N | 39° 11' 25.3700" N |
| | Longitude | 119° 43' 19.5503" W | 119° 43' 19.5503" W |

| DEVIATIONS FROM FAA AIRPORT STANDARDS | | | | |
|---------------------------------------|-----------------------------------|----------|----------|----------------------|
| DEVIATION DESCRIPTION | AFFECTED DESIGN STANDARD | STANDARD | EXISTING | PROPOSED DISPOSITION |
| TERRAIN | Part 77 Approach Surface Runway 9 | 34:1 | VARIES | REMOVE HILL |

FAA APPROVAL STAMP

Carson City Airport Authority

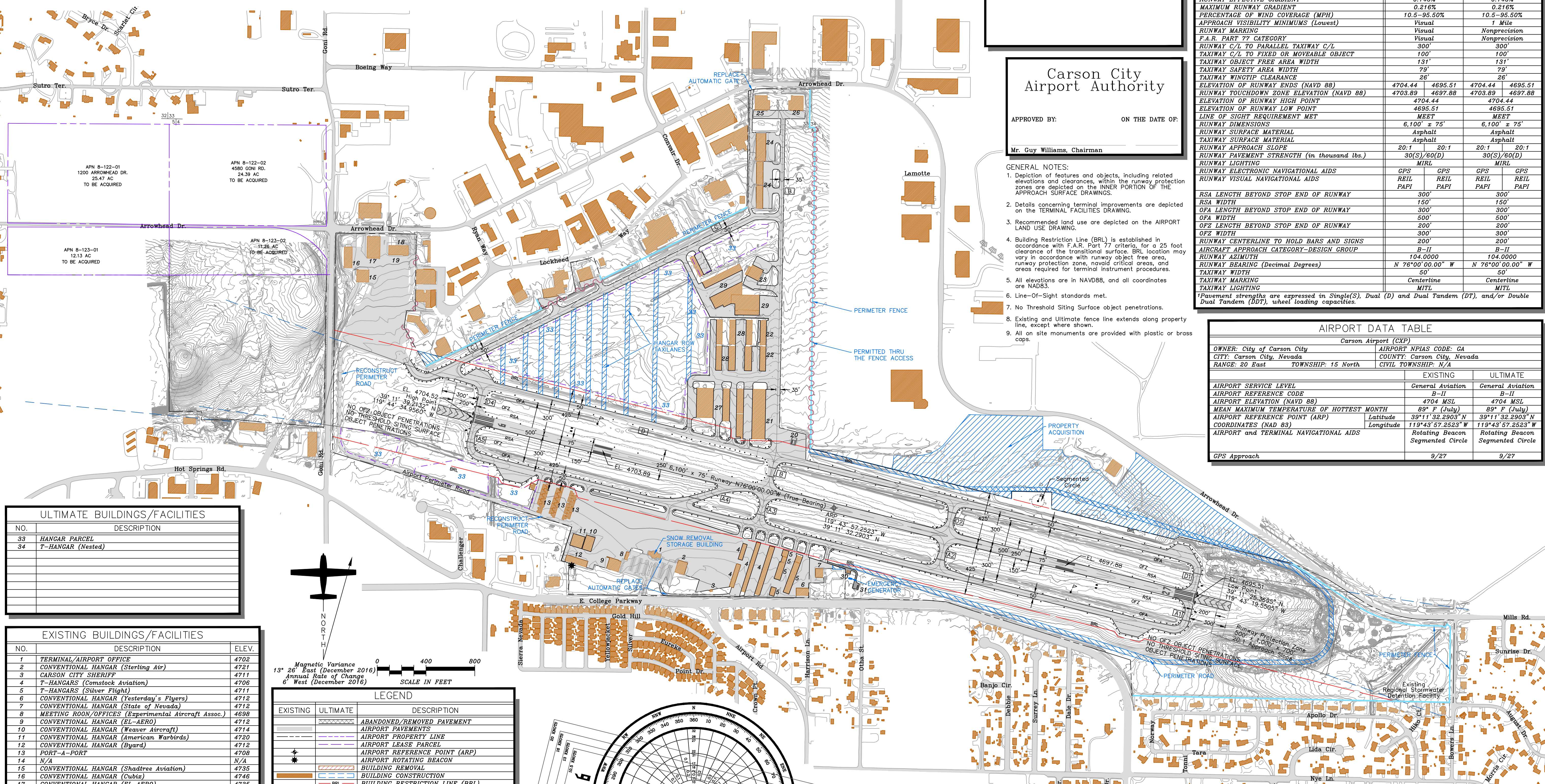
APPROVED BY: _____ ON THE DATE OF: _____

Mr. Guy Williams, Chairman

| RUNWAY DATA | RUNWAY 9-27 | | | |
|---|---------------------|---------|---------------------|---------|
| | EXISTING | | ULTIMATE | |
| | 9 | 27 | 9 | 27 |
| DESIGN AIRCRAFT | Cessna Citation III | | Cessna Citation III | |
| DESIGN AIRCRAFT WINGSPAN | 53.5' | | 53.5' | |
| DESIGN AIRCRAFT APPROACH SPEED | 114 KTS | | 114 KTS | |
| DESIGN AIRCRAFT MAX. CERTIFIED TAKEOFF WEIGHT | 22,000 LBS | | 22,000 LBS | |
| RUNWAY EFFECTIVE GRADIENT | 0.146% | | 0.146% | |
| MAXIMUM RUNWAY GRADIENT | 0.216% | | 0.216% | |
| PERCENTAGE OF WIND COVERAGE (MPH) | 10.5-95.50% | | 10.5-95.50% | |
| APPROACH VISIBILITY MINIMUMS (Lowest) | Visual | | 1 Mile | |
| RUNWAY MARKING | Visual | | Nonprecision | |
| F.A.R. PART 77 CATEGORY | Visual | | Nonprecision | |
| RUNWAY C/L TO PARALLEL TAXIWAY C/L | 300' | | 300' | |
| TAXIWAY C/L TO FIXED OR MOVEABLE OBJECT | 100' | | 100' | |
| TAXIWAY OBJECT FREE AREA WIDTH | 131' | | 131' | |
| TAXIWAY SAFETY AREA WIDTH | 79' | | 79' | |
| TAXIWAY WINGTIP CLEARANCE | 26' | | 26' | |
| ELEVATION OF RUNWAY ENDS (NAVD 88) | 4704.44 | 4695.51 | 4704.44 | 4695.51 |
| RUNWAY TOUCHDOWN ZONE ELEVATION (NAVD 88) | 4703.89 | 4697.88 | 4703.89 | 4697.88 |
| ELEVATION OF RUNWAY HIGH POINT | 4704.44 | | 4704.44 | |
| ELEVATION OF RUNWAY LOW POINT | 4695.51 | | 4695.51 | |
| LINE OF SIGHT REQUIREMENT MET | MEET | | MEET | |
| RUNWAY DIMENSIONS | 6,100' ± 75' | | 6,100' ± 75' | |
| RUNWAY SURFACE MATERIAL | Asphalt | | Asphalt | |
| TAXIWAY SURFACE MATERIAL | Asphalt | | Asphalt | |
| RUNWAY APPROACH SLOPE | 20:1 | 20:1 | 20:1 | 20:1 |
| RUNWAY PAVEMENT STRENGTH (in thousand lbs.) | 30(S)/60(D) | | 30(S)/60(D) | |
| RUNWAY LIGHTING | MIRL | | MIRL | |
| RUNWAY ELECTRONIC NAVIGATIONAL AIDS | GPS | GPS | GPS | GPS |
| RUNWAY VISUAL NAVIGATIONAL AIDS | REIL | REIL | REIL | REIL |
| | PAPI | PAPI | PAPI | PAPI |
| RSA LENGTH BEYOND STOP END OF RUNWAY | 300' | | 300' | |
| OSA WIDTH | 150' | | 150' | |
| OFA LENGTH BEYOND STOP END OF RUNWAY | 300' | | 300' | |
| OFA WIDTH | 500' | | 500' | |
| OFZ LENGTH BEYOND STOP END OF RUNWAY | 200' | | 200' | |
| OFZ WIDTH | 300' | | 300' | |
| RUNWAY CENTERLINE TO HOLD BARS AND SIGNS | 200' | | 200' | |
| AIRCRAFT APPROACH CATEGORY-DESIGN GROUP | B-II | | B-II | |
| RUNWAY AZIMUTH | 104.0000 | | 104.0000 | |
| RUNWAY BEARING (Decimal Degrees) | N 76°00'00.00" W | | N 76°00'00.00" W | |
| TAXIWAY WIDTH | 50' | | 50' | |
| TAXIWAY MARKING | Centerline | | Centerline | |
| TAXIWAY LIGHTING | MITL | | MITL | |

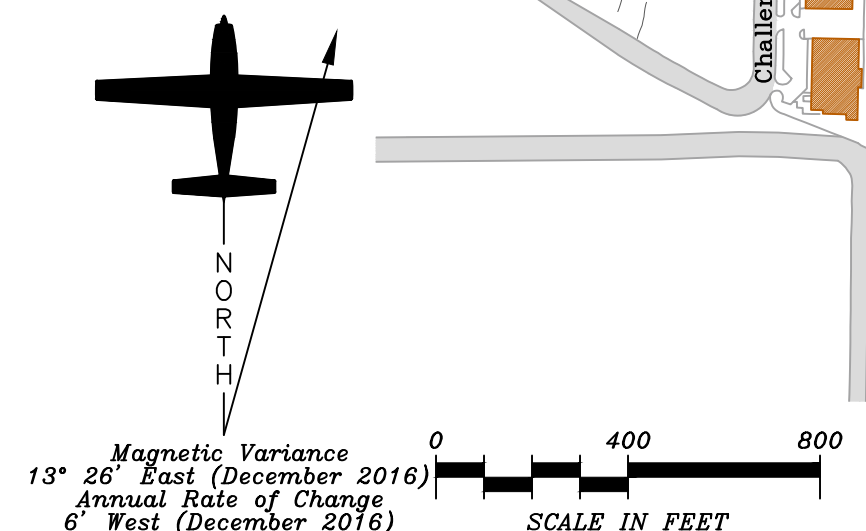
- GENERAL NOTES:
1. Depiction of features and objects, including related elevations and clearances, within the runway protection zones are depicted on the INNER PORTION OF THE APPROACH SURFACE DRAWINGS.
 2. Details concerning terminal improvements are depicted on the TERMINAL FACILITIES DRAWING.
 3. Recommended land use are depicted on the AIRPORT LAND USE DRAWING.
 4. Building Restriction Line (BRL) is established in accordance with F.A.R. Part 77 criteria, for a 25 foot clearance of the transitional surface. BRL location may vary in accordance with runway object free area, runway protection zone, navigational critical areas, and areas required for terminal instrument procedures.
 5. All elevations are in NAVD88, and all coordinates are NAD83.
 6. Line-Of-Sight standards met.
 7. No Threshold Siting Surface object penetrations.
 8. Existing and Ultimate fence line extends along property line, except where shown.
 9. All on site monuments are provided with plastic or brass caps.

| AIRPORT DATA TABLE | | |
|---|-------------------------------------|-------------------------------------|
| | EXISTING | ULTIMATE |
| OWNER: City of Carson City | Carson Airport (CXP) | |
| CITY: Carson City, Nevada | AIRPORT NPIAS CODE: GA | |
| RANGE: 20 East | COUNTY: Carson City, Nevada | |
| | TOWNSHIP: 15 North | |
| | CIVIL TOWNSHIP: N/A | |
| AIRCRAFT SERVICE LEVEL | General Aviation | General Aviation |
| AIRCRAFT REFERENCE CODE | B-II | B-II |
| AIRCRAFT ELEVATION (NAVD 88) | 4704 MSL | 4704 MSL |
| MEAN MAXIMUM TEMPERATURE OF HOTTEST MONTH | 89° F (July) | 89° F (July) |
| AIRCRAFT REFERENCE POINT (ARP) | Latitude 39°11'32.2903" N | 39°11'32.2903" N |
| COORDINATES (NAD 83) | Longitude 119°43'57.2523" W | 119°43'57.2523" W |
| AIRCRAFT AND TERMINAL NAVIGATIONAL AIDS | Rotating Beacon Segmented Circle | Rotating Beacon Segmented Circle |
| GPS Approach | 9/27 | 9/27 |

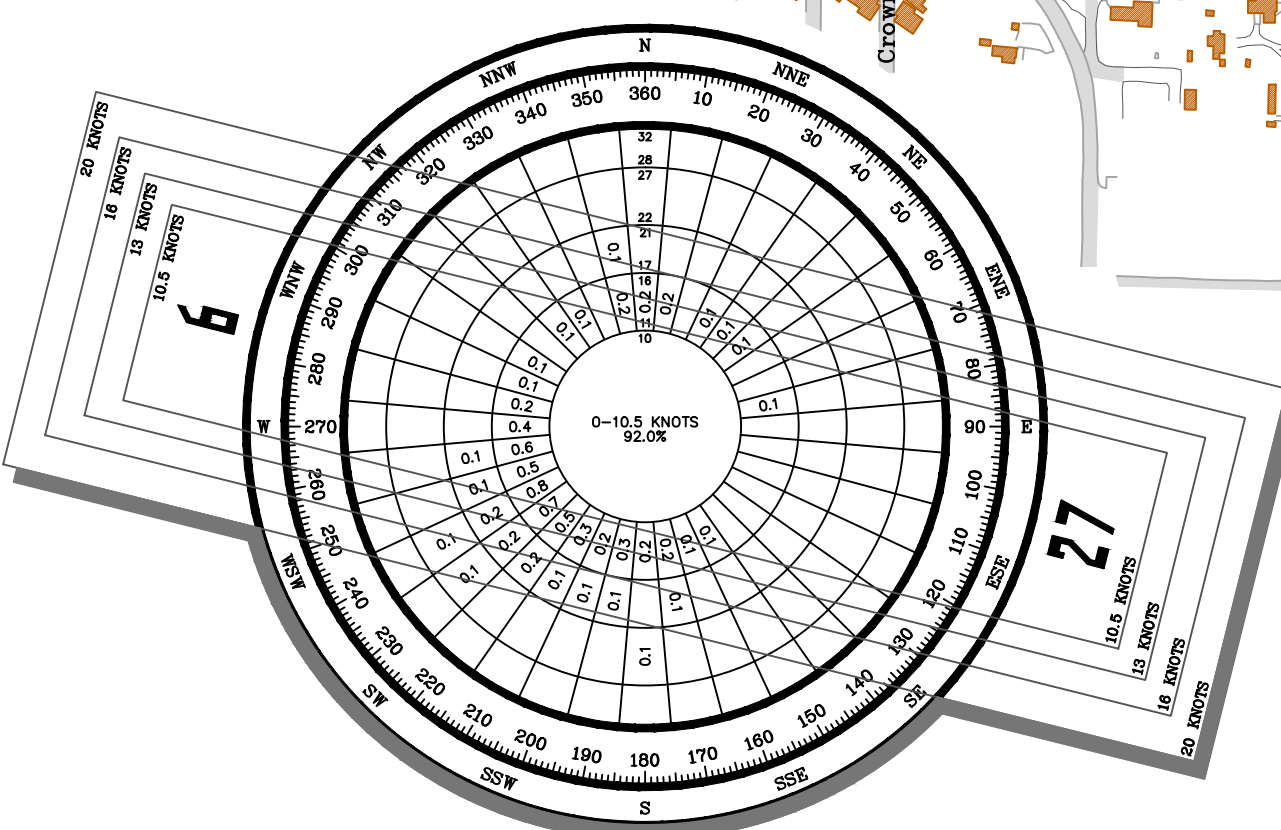


| ULTIMATE BUILDINGS/FACILITIES | | |
|-------------------------------|-------------------|-------|
| NO. | DESCRIPTION | ELEV. |
| 33 | HANGAR PARCEL | |
| 34 | T-HANGAR (Nested) | |

| EXISTING BUILDINGS/FACILITIES | | |
|-------------------------------|---|-------|
| NO. | DESCRIPTION | ELEV. |
| 1 | TERMINAL/AIRPORT OFFICE | 4702 |
| 2 | CONVENTIONAL HANGAR (Sterling Air) | 4721 |
| 3 | CARSON CITY SHERIFF | 4711 |
| 4 | T-HANGARS (Comstock Aviation) | 4706 |
| 5 | T-HANGARS (Silver Flight) | 4711 |
| 6 | CONVENTIONAL HANGAR (Yesterday's Flyers) | 4712 |
| 7 | CONVENTIONAL HANGAR (State of Nevada) | 4712 |
| 8 | MEETING ROOM/OFFICES (Experimental Aircraft Assoc.) | 4698 |
| 9 | CONVENTIONAL HANGAR (EL-AERO) | 4712 |
| 10 | CONVENTIONAL HANGAR (Weaver Aircraft) | 4714 |
| 11 | CONVENTIONAL HANGAR (American Warbirds) | 4720 |
| 12 | CONVENTIONAL HANGAR (Byard) | 4712 |
| 13 | PORT-A-PORT | 4709 |
| 14 | N/A | N/A |
| 15 | CONVENTIONAL HANGAR (Shadree Aviation) | 4735 |
| 16 | CONVENTIONAL HANGAR (Cubitz) | 4746 |
| 17 | CONVENTIONAL HANGAR (EL-AERO) | 4735 |
| 18 | CONVENTIONAL HANGAR (EL-AERO) | 4738 |
| 19 | FUEL STORAGE (EL-AERO) | N/A |
| 20 | FUEL FACILITY (Mtn. West Aviation) | N/A |
| 21 | T-HANGARS (Pletcher) | 4728 |
| 22 | T-HANGARS (Crystal Bay Aviation/Fletcher) | 4743 |
| 23 | CONVENTIONAL HANGAR (Contra) | 4763 |
| 24 | CONVENTIONAL HANGAR (Corrao) | 4755 |
| 25 | CONVENTIONAL HANGAR (Brooks) | 4772 |
| 26 | CONVENTIONAL HANGAR (Corrao) | 4774 |
| 27 | CONVENTIONAL HANGAR (WT Investments) | N/A |
| 28 | CONVENTIONAL HANGAR (Carson Air Group) | N/A |
| 29 | CONVENTIONAL HANGAR (Jet Ranch) | N/A |
| 30 | AIRCRAFT ELECTRICAL VAULT | 4697 |
| 31 | AUTOMATED WEATHER OBSERVATION SYSTEM (AWOS) | 4695 |



| LEGEND | | |
|----------|----------|---|
| EXISTING | ULTIMATE | DESCRIPTION |
| | XXXXXX | ABANDONED/REMOVED PAVEMENT |
| | ----- | AIRCRAFT PAVEMENTS |
| | ----- | AIRCRAFT PROPERTY LINE |
| | ----- | AIRCRAFT LEASE PARCEL |
| | + | AIRCRAFT REFERENCE POINT (ARP) |
| | * | AIRCRAFT ROTATING BEACON |
| | ----- | BUILDING REMOVAL |
| | ----- | BUILDING CONSTRUCTION |
| | ----- | BUILDING RESTRICTION LINE (BRL) |
| | ----- | PERMITTED THRU THE FENCE ACCESS |
| | ----- | FENCING |
| | ----- | OBTAIN AVIGATION EASEMENT |
| | ----- | NAVIGATIONAL AID INSTALLATION |
| | ----- | RUNWAY EDGE LIGHTS |
| | ----- | RUNWAY END IDENTIFICATION LIGHTS (REIL) |
| | ----- | RUNWAY OBJECT FREE AREA |
| | ----- | RUNWAY OBSTACLE FREE ZONE |
| | ----- | RUNWAY SAFETY AREA |
| | ----- | RUNWAY THRESHOLD LIGHTS |
| | ----- | SECTION CORNER |
| | ----- | SEGMENTED CIRCLE/WIND INDICATOR |
| | ----- | TAXIWAY DESIGNATIONS |
| | ----- | CONTOUR |
| | ----- | WIND INDICATOR (Lighted) |



| ALL WEATHER WIND COVERAGE | 12 MPH |
|---------------------------|--------|
| Runway 9-27 | 95.50% |

| No. | REVISIONS | DATE | BY | APP'D. |
|-----|--------------------------------|-------|----|--------|
| 1 | Updated ALP | 8/06 | BF | NW |
| 2 | Updated ALP | 1/09 | BF | |
| 3 | Realigned Runway Configuration | 12/10 | BF | |
| 4 | Updated Projects | 12/14 | BF | |

THE CONTENTS OF THIS PLAN DO NOT NECESSARILY REFLECT THE OFFICIAL VIEWS OR POLICY OF THE FAA. ACCEPTANCE OF THIS DOCUMENT BY THE FAA DOES NOT IN ANY WAY CONSTITUTE A COMMITMENT ON THE PART OF THE UNITED STATES TO PARTICIPATE IN ANY DEVELOPMENT DEPICTED HEREIN NOR DOES IT GUARANTEE THAT THE PROPOSED DEVELOPMENT IS ENVIRONMENTALLY ACCEPTABLE IN ACCORDANCE WITH APPROPRIATE PUBLIC LAWS.

Carson City Airport

AIRPORT LAYOUT PLAN

Carson City, Nevada

PLANNED BY: JWC
 DETAILED BY: BDF
 APPROVED BY: GW
 FEBRUARY 2016
 SHEET 2 OF 9

SOURCE:
 Carson City Weather Station
 Carson City, Nevada
 January 1987 to December 1987